

Preventing Stormwater Pollution

What We Can Do

**Recognizing and Reporting Illicit
Discharges**



**WYOMING VALLEY
SANITARY AUTHORITY**

Together, we put water in its place.

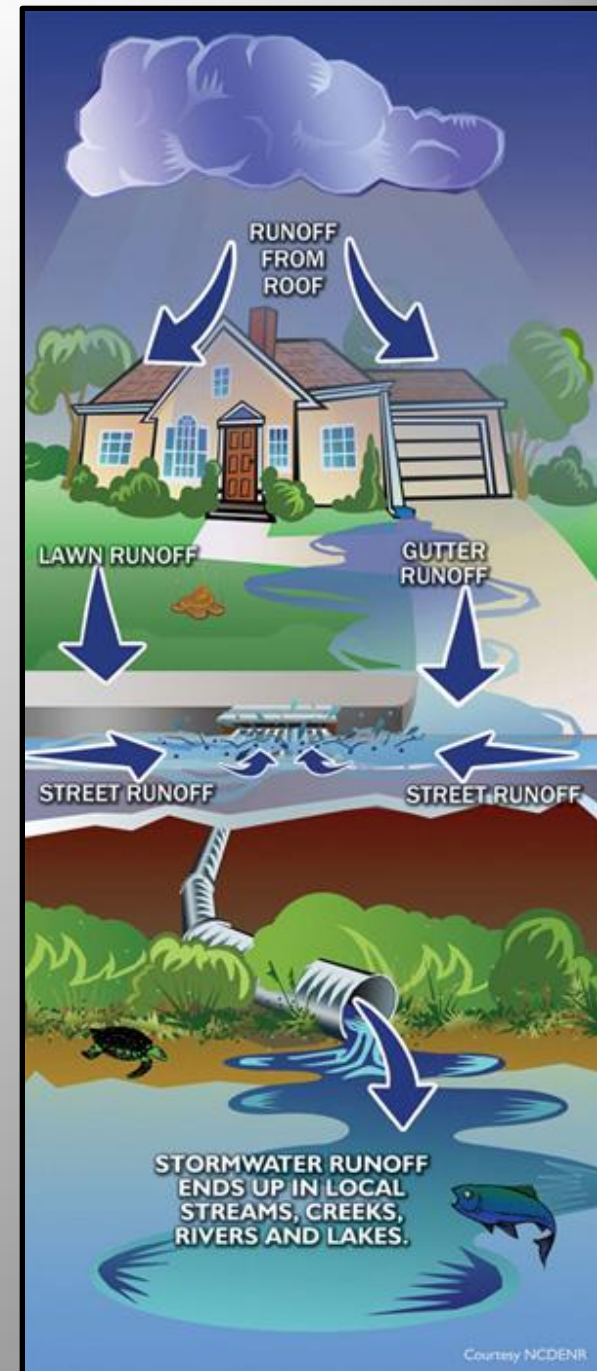
Training Goals

- Understand the terms “stormwater” and “illicit discharge”
- Understand why these terms are important and why you should care
- Understand what you can do to help prevent stormwater pollution
- Understand how to recognize and report illicit discharges (pollution)



What is Stormwater?

- When it rains, water that does not soak into the ground becomes runoff
- This runoff can enter a storm sewer system which ends up in local streams, creeks, rivers, and lakes



Why is Stormwater Runoff Important?

- Stormwater runoff can pick up debris, chemicals, dirt, and other pollutants
- Stormwater runoff is **NOT** treated before it is discharged into local streams, creeks, rivers, and lakes

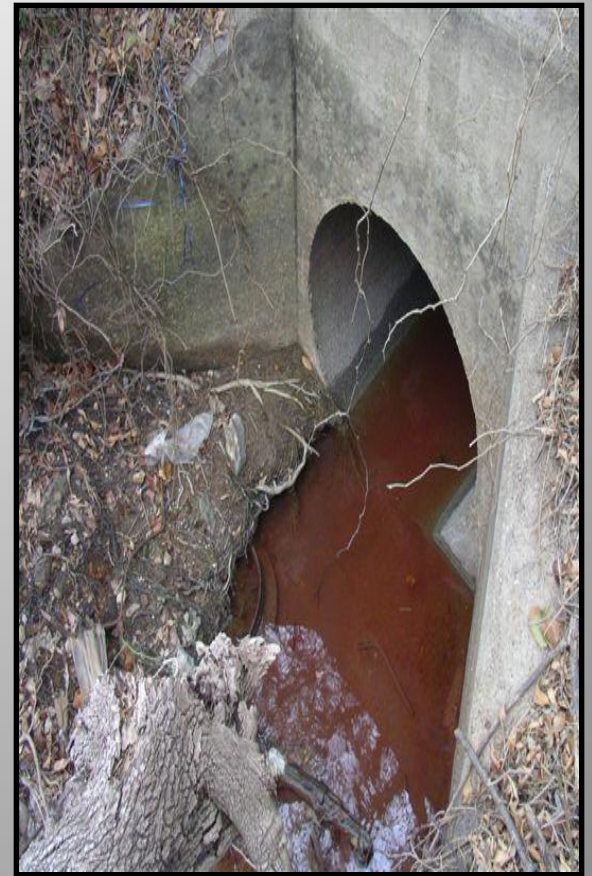


What is an Illicit Discharge?

- Any discharge to the storm sewer system that is not composed entirely of stormwater
- Exceptions include:
 - Water line flushing
 - Runoff or return flow from landscape irrigation
 - Discharges from potable water sources
 - Diverted stream flows
 - Rising ground waters and springs
 - Uncontaminated ground water infiltration
 - Uncontaminated pumped ground water
 - Foundation and footing drains
 - Air conditioning condensation
 - Water from crawl space pumps
 - Individual residential vehicle washing
 - Flows from wetlands and riparian habitats
 - Dechlorinated swimming pool discharges
 - Street wash water
 - Discharges or flows from fire fighting activities
 - Etc.

Why are Illicit Discharges Important?

- Illicit discharges often include pathogens, nutrients, toxic pollutants, etc.
- Illicit discharges = pollution
- Anything that enters a storm sewer system flows untreated to a local waterway



Why Should You Care?

- We use local waterways for swimming, fishing, boating, and as a source of drinking water
- Local municipalities are required to prevent pollutants from entering the storm sewer system



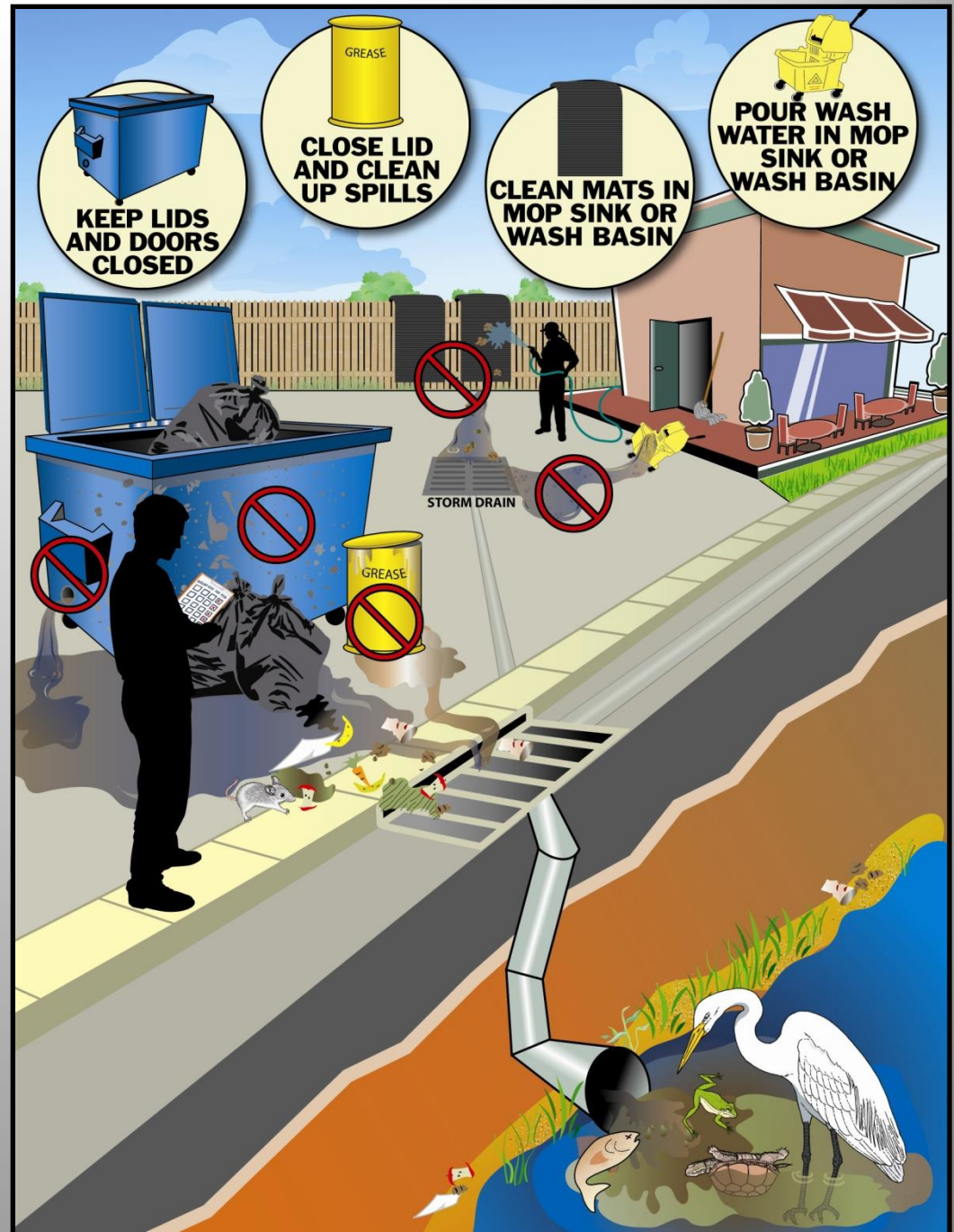
What Can You Do?

- Citizens can help prevent stormwater pollution by:
 - Preventing pollutants from being dumped or spilled into the storm sewer system (this includes driveways, sidewalks, streets, storm drains)
 - Reporting pollution or questionable discharges to the storm sewer system or local waterways



Preventing Pollution

- Store and handle materials safely
- Clean up spills properly
- Never dump or wash out items down or near a storm drain



Reporting Pollution

- If you see questionable discharges entering the storm sewer system or someone dumping something down the storm drain, report it



Examples of What to Report

Pollution Entering the Storm Sewer System



Dirty water in the street



Wash out of solids/liquids



Unusually colored discharges



Liquids dumped down a storm drain



Leaks



Solids blown or swept in the street or down a storm drain

Reporting Pollution

- If you see warning signs of pollution coming out of a pipe or in a local waterway, report it
- Warning signs may include the presence of unusual:
 - Color
 - Odor
 - Turbidity
 - Floatable liquids and solids
 - Etc.



Examples of What to Report

Unusual Water Color



Pea-green/
bright green

Milky gray-black



Milky white



Dark red, purple, blue, black



Tan to light
brown



Examples of What to Report

Unusual Odor

- Some odors are an immediate indicator of pollution
- Sewage, gasoline, and chemical odors should be reported

Odor	Causes
Rotten eggs/hydrogen sulfide	Raw sewage, decomposing organic matter, lack of oxygen
Sharp, pungent odor	Chemicals or pesticides
Gasoline, petroleum	Industrial discharge, illegal dumping of wastes, waste water

Examples of What to Report

Highly Turbid Water



Construction site
discharge

Discharge of rinse
from floor sanding



Unknown brown
turbid discharge

Sewage
discharge



Examples of What to Report

Floatables in the Water



Leaves
and grass
clippings

Trash and
debris



Sewage fungus



Oil sheen



Suds



How to Report

- Call your local municipal reporting hotline or submit an illicit discharge complaint form.
- Include the following information:
 - Specific location
 - Date and time
 - Description of the pollution
 - Description of the violator, e.g. license plate #, personal description (if applicable)
 - Your contact information
 - Email a picture if you can

Municipal Contact Information

- Ashley: 570-270-5839, ashleypa.net
- Courtdale: 570-287-8839
- Duryea: 570-655-2829, duryeaborough.com
- Edwardsville: 570-288-6484, edwardsvilleborough.com
- Exeter: 570-654-3001, exeterborough.com
- Forty-Fort: 570-287-8586, fortyfort.org
- Hanover: 570-825-1240, hanovertownship.org
- Hughestown: 570-654-2061,
- Jenkins: 570-654-3315, jenkinstownship.net
- Kingston: 570-288-4576, kingstonpa.org
- Laflin: 570-654-3343, laflinboro.com
- Larksville: 570-714-9846, larksvilleborough.org
- Luzerne: 570-287-7633, luzerneborough.org
- Nanticoke: 570-735-6190, nanticokecity.com
- Pittston City: 570-654-0513, pittstoncity.org
- Pittston Township: 570.654.0161, pittstontownship.org
- Plymouth Township: 570-779-5388
- Pringle: 570-288-2339, pringlepa.us
- Sugar Notch: 570-822-8292, sugarnotchborough.com
- Swoyersville: 570-288-6565, swoyersvillepa.us
- West Pittston: 570-655-7782, westpittstonboro.com
- West Wyoming: 570-693-1311, westwyoming.org
- Wilkes-Barre City: 570-693-1311, wilkes-barre.city
- Wyoming: 570-693-0291, wyomingpa.org
- Yatesville: 570-654-2455
- Jackson: 570-675-8371, jacksontownshippa.gov
- Lehman: 570-674-7788, lehmanpa.com
- Harvey's Lake: 570-639-2213, harveyslakeborough.com
- Newport: 570-735-4735, newporttownship.org
- Wilkes-Barre Twp: 570-208-4635, twp.wilkesbarre.pa.us
- Plymouth Boro: 570-779-1001, plymouthborough.org
- Plains: 570-829-3439, plainstownship.org